

Course evaluation for GEON08 2021 report

For 2021, it was the ninth time the Master course GEON08 (previously called GEON04) was taught. Nine students took the course this year and eight answered the course evaluation.

The statistics for the course are shown below, and in this summary, only general comments are made. All involved teachers and the student representatives have received the full report, including comments on each lecture. The involved teachers are asked to reflect upon their role and how the lectures and seminars can be improved for next year. In general the teachers have received very good mark.

Overall the comments from the students were very positive. The course received grades with an overall average of 4.4, which is very positive.

Development from 2020

The course has developed from 2020. We took on-board in the criticism from the course evaluation from 2020 which was related to the overlap with the course "Palaeoecological methods and environmental analysis" (Master course) and to some degree also with the course "Sedimentary Geology and Basin Analysis" (Master course). The feedback from 2020 also involved how the 15 hp was divided and that the field group project work should be part of the examination. This was all implemented for 2021

Reflections and Major challenges for 2021 (to be implemented 2022)

Due to the pandemic, all the lectures and most of the exercises were online this year. It is challenging for everyone involved. It is more challenging to lecture in an engaging way when the natural connection with the students is lost, but overall the lectures received good marks. The students were also very good at being present, having the cameras on, and being responsive. We worked with breakout rooms, but this aspect could be developed further. A 45-minute lecture is also a very long time online, and if we continue with online lectures, it is recommended to break it down into shorter sessions. The majority of the lectures were recorded and uploaded to the course Canvas site. The Canvas site got overall good marks, and the structure will be kept for next year. However, we will present the site more in detail during the course introduction.

The major criticism regarding the course is related to the instructions after the fieldwork. Last year we experienced a positive trend regarding this aspect, but this year it didn't work out as well as we had wanted to be. It is partly due to the pandemic and that sufficient adaptations were not made. But either way, it is clear that the instructions given in relation to the post fieldwork work isn't sufficient and it needs to be improved. The students recommended a pdf file instead for a powerpoint file, this is a very good suggestion, which will be implemented.

For next year a pdf file will be compiled with instructions, in particular with respect to the work to be done after the fieldwork. The pdf will be compiled by the course coordinator and sent out for review to the PhD students involved in the course. Their feedback will be incorporated into the pdf. More detailed instructions regarding the aim will help the students to work independently in the lab.

Further, we will continue to develop the seminars to be as rewarding and interesting as possible. The course is taken by a wide range of students and we always need to think about a way to accommodate this large diversity in background knowledge. The diversity is also a major strength as it promotes more discussion and cross-disciplinarity. The course evaluation demonstrates again how important and popular the fieldwork is; it is imperative to keep this part of the course. The students felt they could easily approach the teachers and that the covid rules were followed.



Helena Filipsson
course coordinator



Giulia Lodi <gi0514lo-s@student.lu.se>
student representative



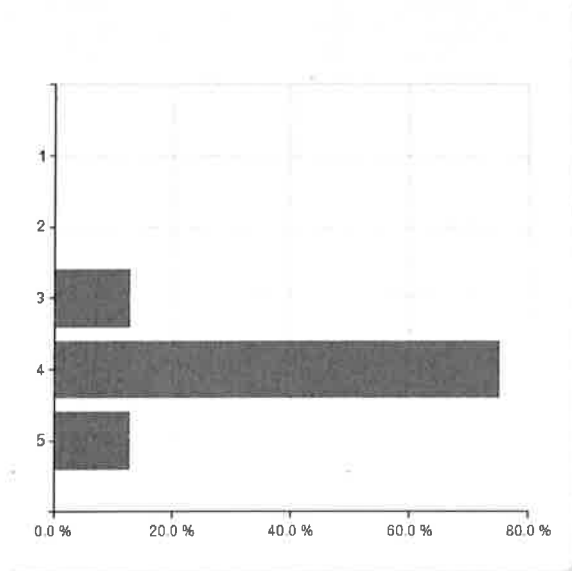
Karl Höjbert ka6517ho-s@student.lu.se
student representative

GEON08 course evaluation 2021

Respondents: 9
 Answer Count: 8
 Answer Frequency: 89 %

What did you think overall about the course? (5 is the highest, 1 is the lowest)

What did you think overall about the course? (5 is the highest, 1 is the lowest)	Number of Responses
1	0 (0.0%)
2	0 (0.0%)
3	1 (12.5%)
4	6 (75.0%)
5	1 (12.5%)
Total	8 (100.0%)

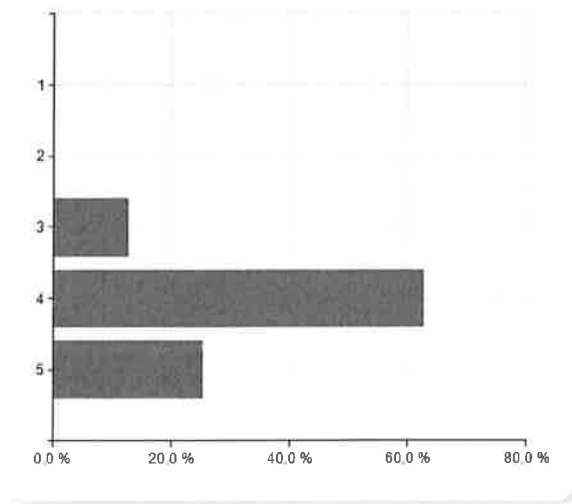


	Mean	Standard Deviation
What did you think overall about the course? (5 is the highest, 1 is the lowest)	4.0	0.5

What did you think overall about the lectures? (5 is the highest, 1 is the lowest)

What did you think overall about the lectures? (5 is the highest, 1 is the lowest)	Number of Responses
1	0 (0.0%)
2	0 (0.0%)

4	5 (62.5%)
5	2 (25.0%)
Total	8 (100.0%)

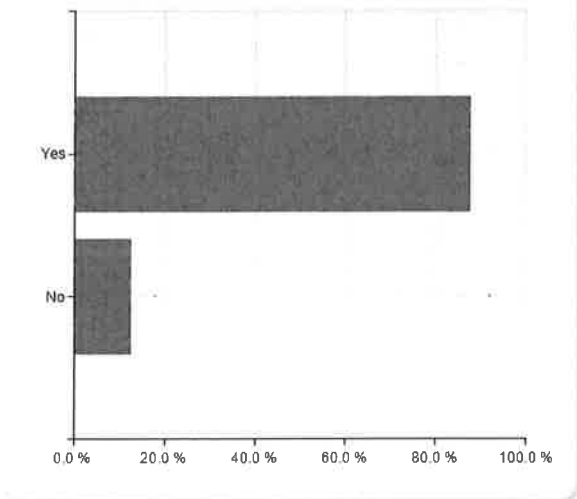


Mean	Standard Deviation
4.1	0.6

What did you think overall about the lectures? (5 is the highest, 1 is the lowest)

Did the seminars/exercises in connection with the lectures increase your own learning?

Did the seminars/exercises in connection with the lectures increase your own learning?	Number of Responses
Yes	7 (87.5%)
No	1 (12.5%)
Total	8 (100.0%)



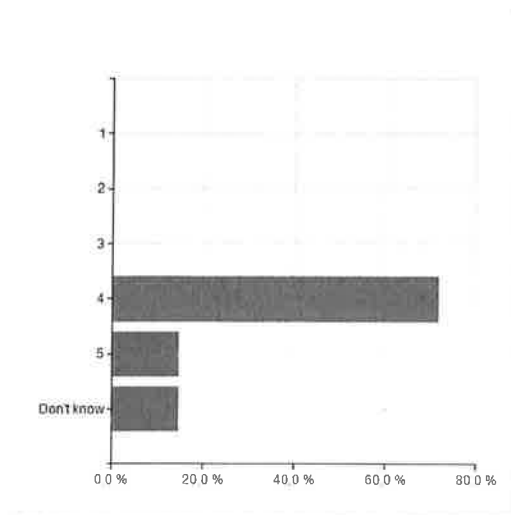
Mean	Standard Deviation
1.1	0.4

Did the seminars/exercises in connection with the lectures increase your own learning?

This year there was a movie instead of the sieving exercise, how did this work?

**What did you think about the lab work in connection to the lectures?
(foraminifera)**

This year there was a movie instead of the sieving exercise, how did this work?	Number of Responses
1	0 (0.0%)
2	0 (0.0%)
3	0 (0.0%)
4	5 (71.4%)
5	1 (14.3%)
Don't know	1 (14.3%)
Total	7 (100.0%)



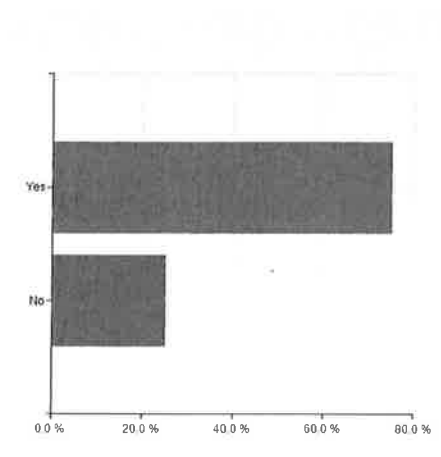
What did you think about the lab work in connection to the lectures? (foraminifera)

What did you think about the lab work in connection to the lectures? (foraminifera)

	Mean	Standard Deviation
This year there was a movie instead of the sieving exercise, how did this work?	4.2	0.4

Did you think that working with the study questions from the books promoted your own learning?

Did you think that working with the study questions from the books promoted your own learning?	Number of Responses
Yes	6 (75.0%)
No	2 (25.0%)
Total	8 (100.0%)

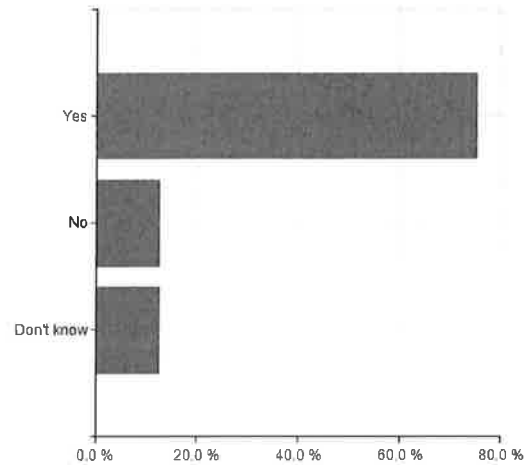


	Mean	Standard Deviation
Did you think that working with the study questions from the books promoted your own learning?	1.3	0.5

Do you think we should keep the ocean resource parts as they are now, with student presentations?

Do you think we should keep the Number of

No	1 (12.5%)
Don't know	1 (12.5%)
Total	8 (100.0%)

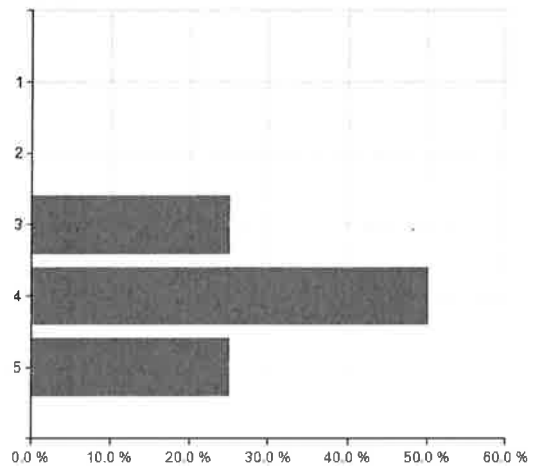


Mean	Standard Deviation
1.1	0.4

Do you think we should keep the ocean resource parts as they are now, with student presentations?

What did you think about the field - and lab work, and report writing? Keeping in mind the corona restrictions.

What did you think about the field - and lab work, and report writing? Keeping in mind the corona restrictions.	Number of Responses
1	0 (0.0%)
2	0 (0.0%)
3	2 (25.0%)
4	4 (50.0%)
5	2 (25.0%)
Total	8 (100.0%)



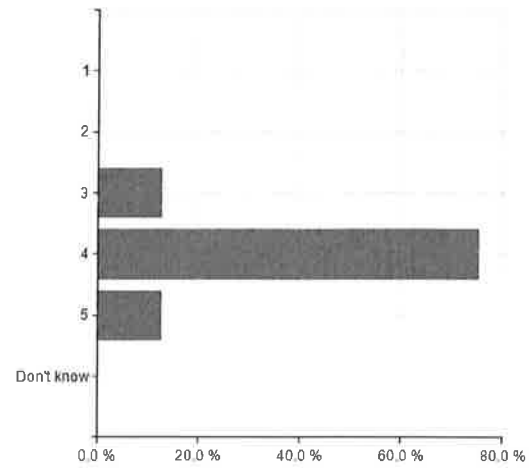
Mean	Standard Deviation
4.0	0.8

What did you think about the field - and lab work, and report writing? Keeping in mind the corona restrictions.

What did you think about the course literature?

What did you think about the Number of

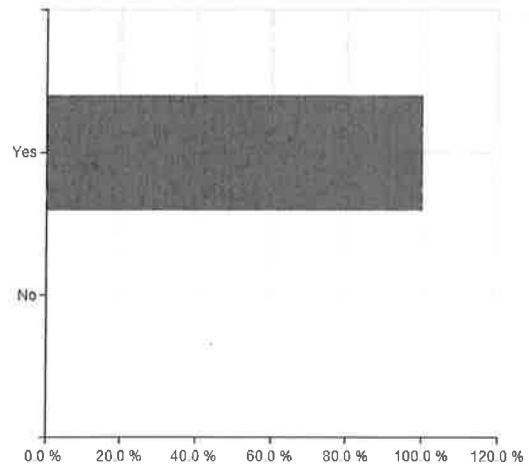
Don't know	0 (0.0%)
Total	8 (100.0%)



	Mean	Standard Deviation
What did you think about the course literature?	4.0	0.5

Did you read the course literature?

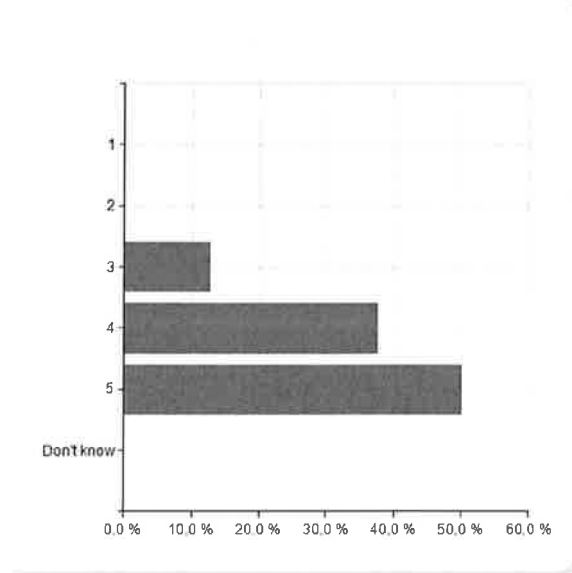
Did you read the course literature?	Number of Responses
Yes	8 (100.0%)
No	0 (0.0%)
Total	8 (100.0%)



	Mean	Standard Deviation
Did you read the course literature?	1.0	0.0

What do you think about Canvas?

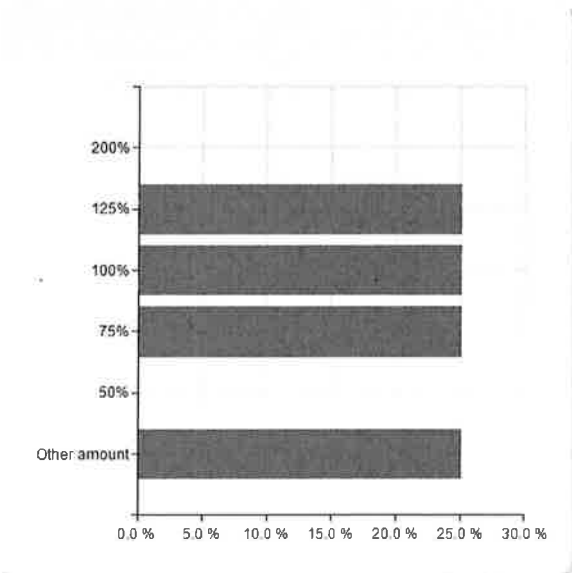
What do you think about Canvas?	Number of Responses
1	0 (0.0%)
2	0 (0.0%)
3	1 (12.5%)
4	3 (37.5%)
5	4 (50.0%)
Don't know	0 (0.0%)
Total	8 (100.0%)



What do you think about Canvas?	Mean	Standard Deviation
What do you think about Canvas?	4.4	0.7

Workload: How much time have you spent on your studies during the course (100% corresponds to full time 8h/day)

Workload: How much time have you spent on your studies during the course (100% corresponds to full time 8h/day)	Number of Responses
200%	0 (0.0%)
125%	2 (25.0%)
100%	2 (25.0%)
75%	2 (25.0%)
50%	0 (0.0%)
Other amount	2 (25.0%)
Total	8 (100.0%)

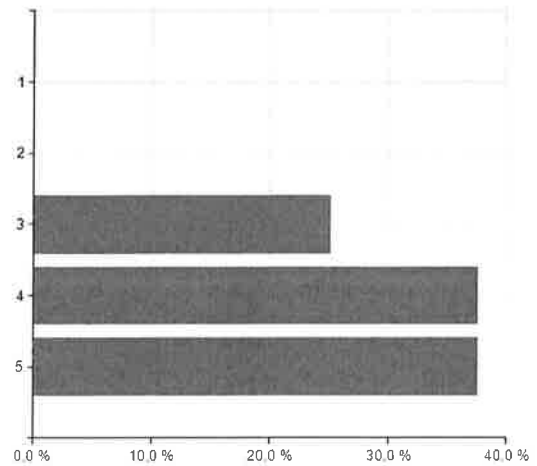


Workload: How much time have you spent on your studies during the course (100% corresponds to full time 8h/day)	Mean	Standard Deviation
Workload: How much time have you spent on your studies during the course (100% corresponds to full time 8h/day)	4.0	0.9

Transferable skills (rank 1-5: 5 completely agree - 1 completely disagree)

The course has improved my ability to communicate -orally and/or written

The course has improved my ability to communicate -orally and/or written	Number of Responses
1	0 (0.0%)
2	0 (0.0%)
3	2 (25.0%)
4	3 (37.5%)
5	3 (37.5%)
Total	8 (100.0%)

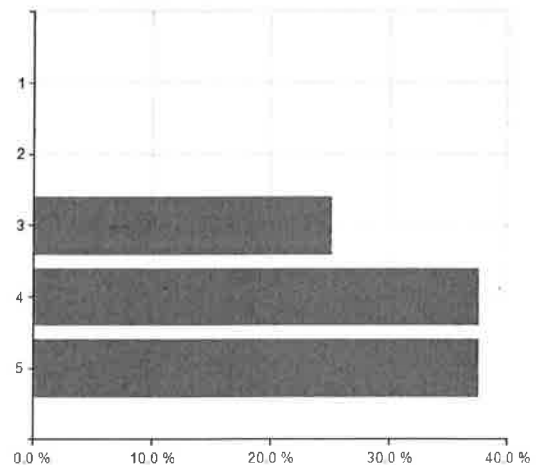


Mean	Standard Deviation
4.1	0.8

The course has improved my ability to communicate -orally and/or written

The course has improved my ability to work in a team

The course has improved my ability to work in a team	Number of Responses
1	0 (0.0%)
2	0 (0.0%)
3	2 (25.0%)
4	3 (37.5%)
5	3 (37.5%)
Total	8 (100.0%)



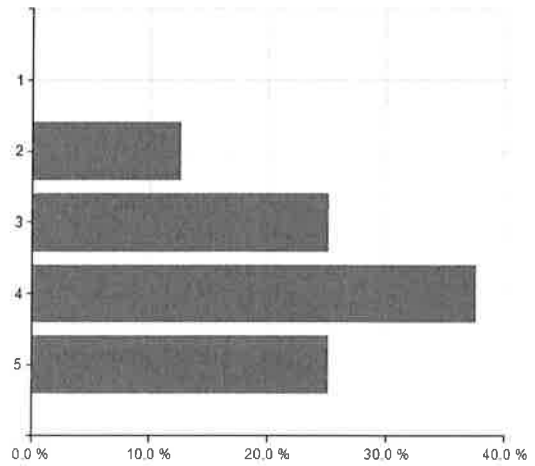
Mean	Standard Deviation
4.1	0.8

The course has improved my ability to work in a team

The course has improved my ability to think analytical and solve problems

The course has improved my ability to think analytical and solve problems	Number of Responses
1	0 (0.0%)

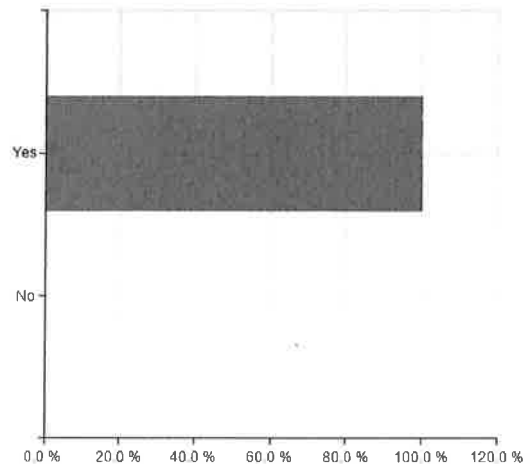
4	3 (37.5%)
5	2 (25.0%)
Total	8 (100.0%)



	Mean	Standard Deviation
The course has improved my ability to think analytical and solve problems	3.8	1.0

Were the teachers easy to approach and easy to reach?

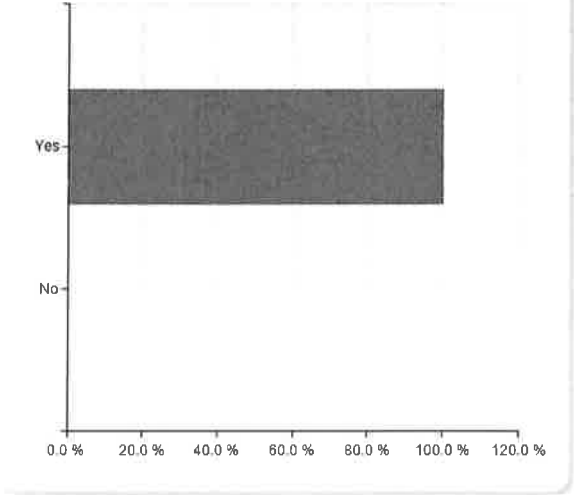
Were the teachers easy to approach and easy to reach?	Number of Responses
Yes	8 (100.0%)
No	0 (0.0%)
Total	8 (100.0%)



	Mean	Standard Deviation
Were the teachers easy to approach and easy to reach?	1.0	0.0

Did you feel that the "covid rules" were communicated and followed?

Did you feel that the "covid rules" were communicated and followed?	Number of Responses
Yes	8 (100.0%)
No	0 (0.0%)
Total	8 (100.0%)



Mean	Standard Deviation
1.0	0.0

Did you feel that the "covid rules" were communicated and followed?