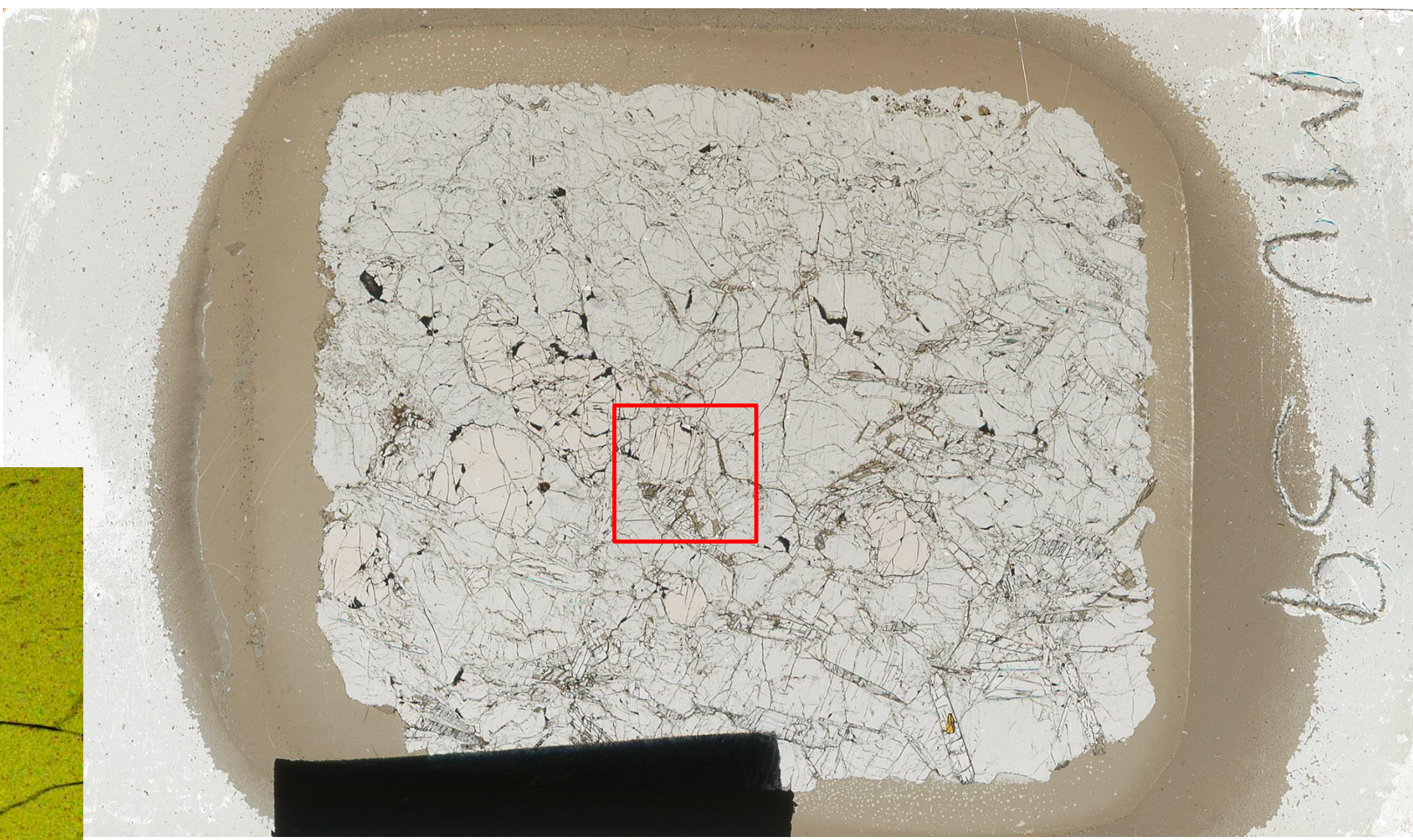
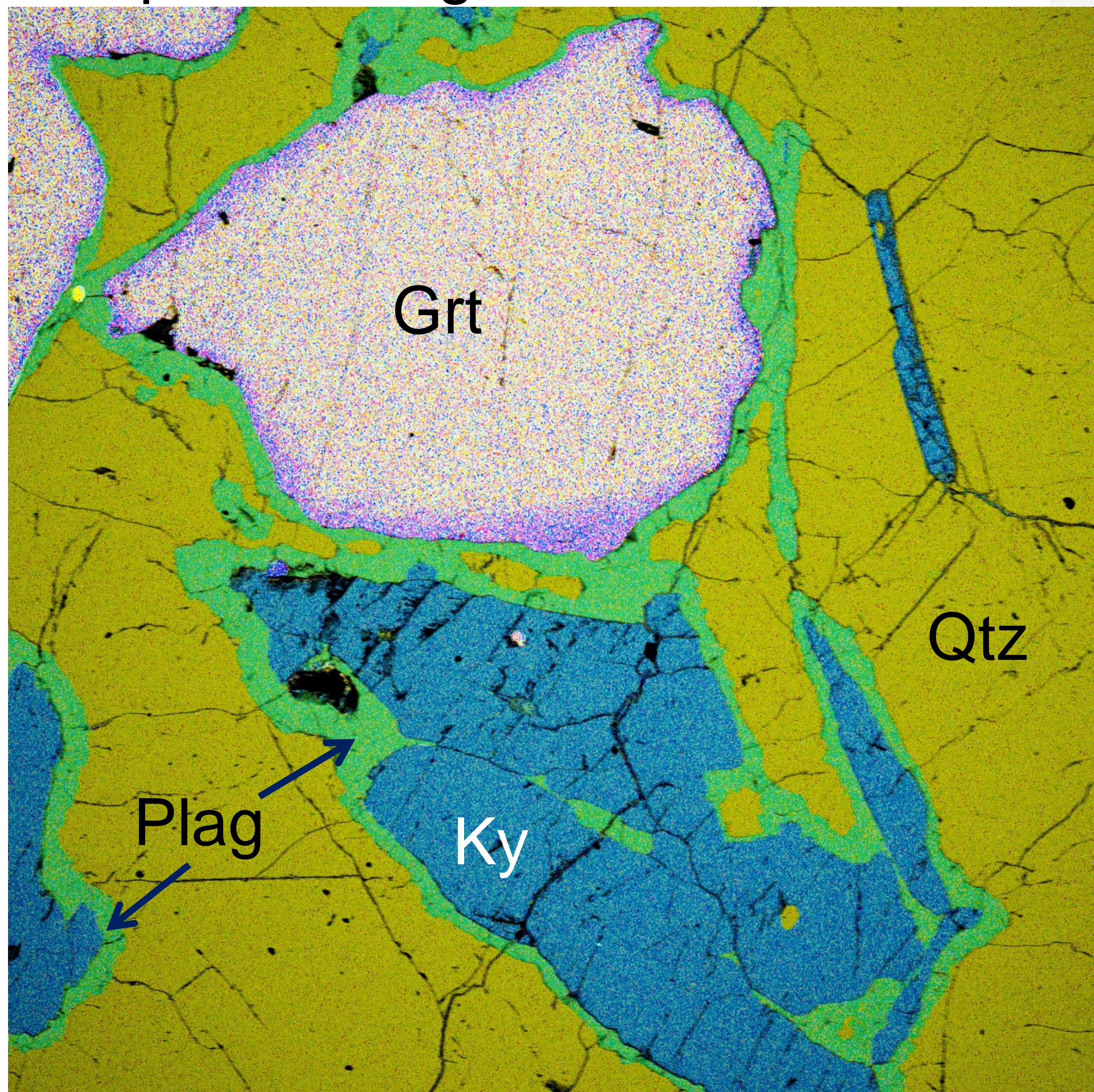


CHEMICAL MAPS

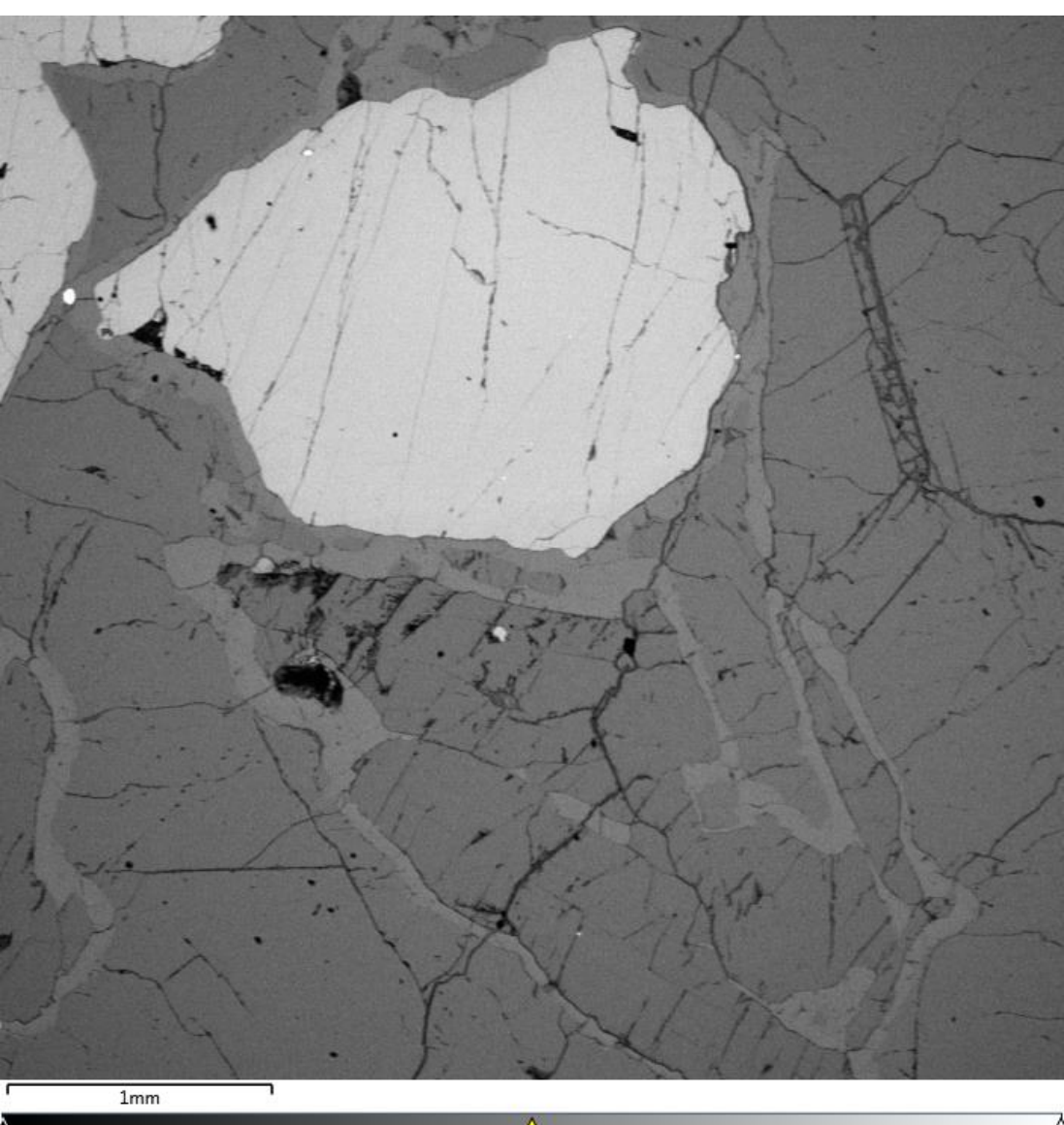
Composite image



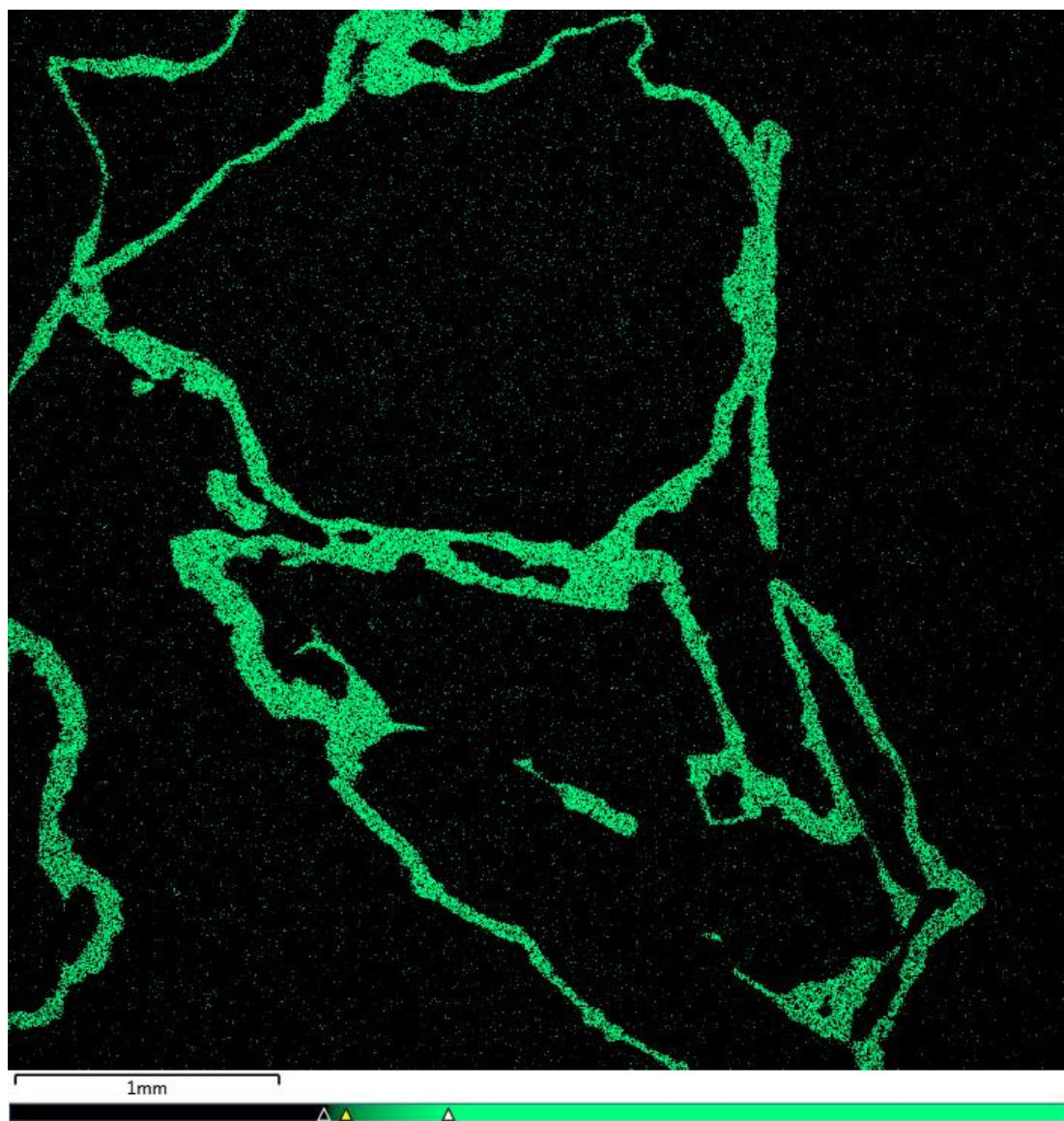
Sample MU39

The map data on this poster was acquired during about 40 minutes. The maps identify the different phases in the sample: garnet and kyanite set in a matrix of quartz, and plagioclase that has formed along the grain boundaries between the other phases. The compositional zoning of garnet, with increasing Mg and Fe and decreasing Ca along the rim, shows well.

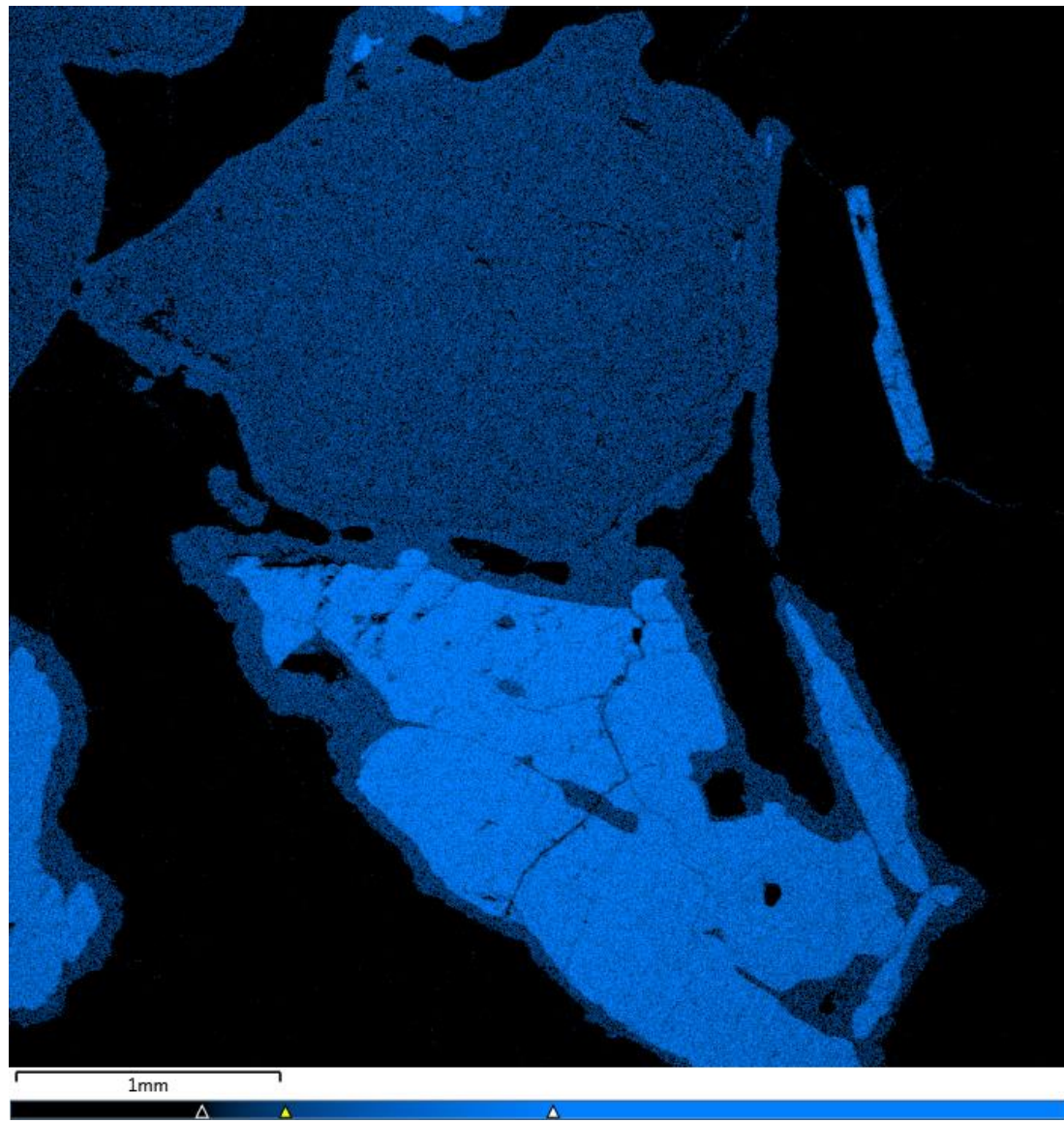
BSE



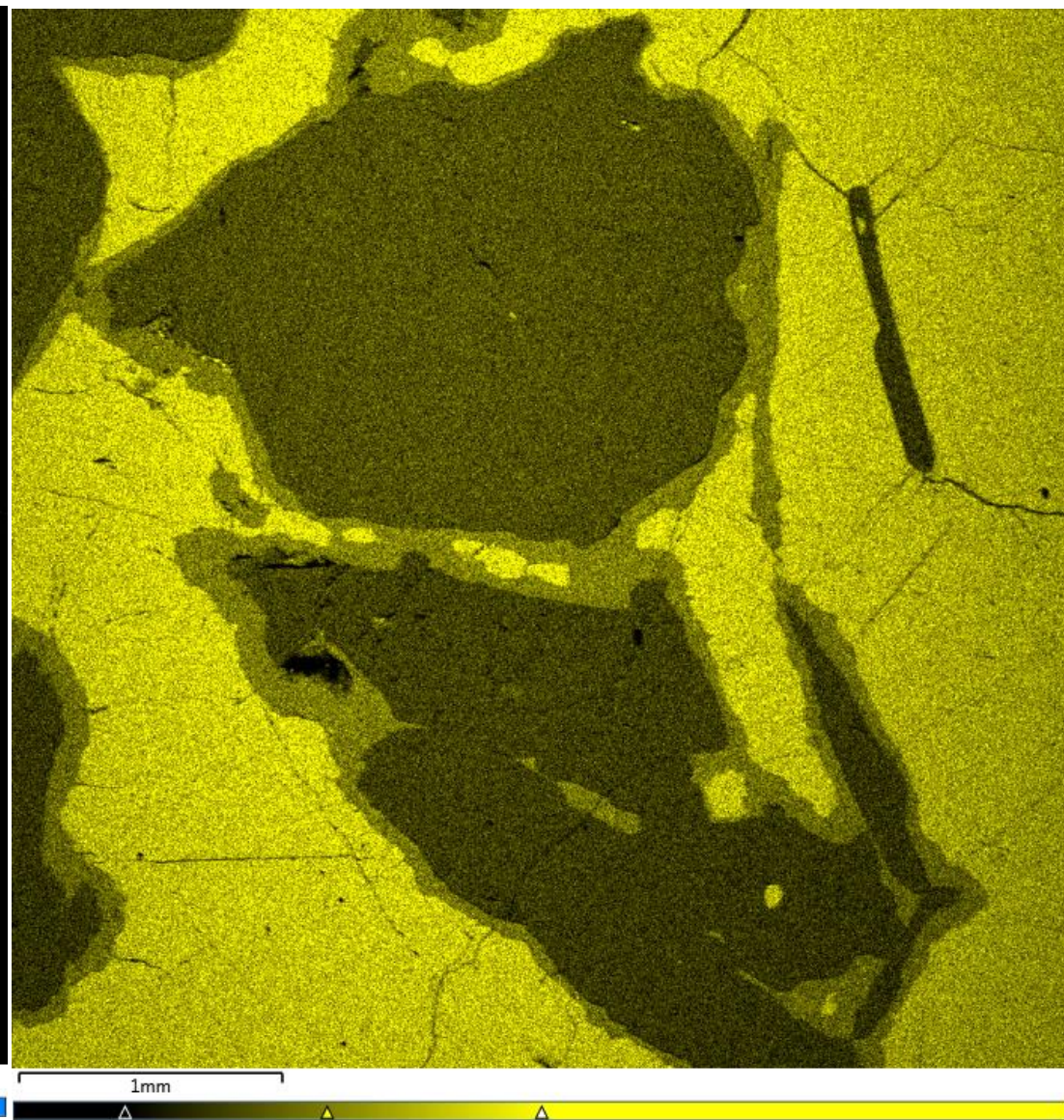
Na



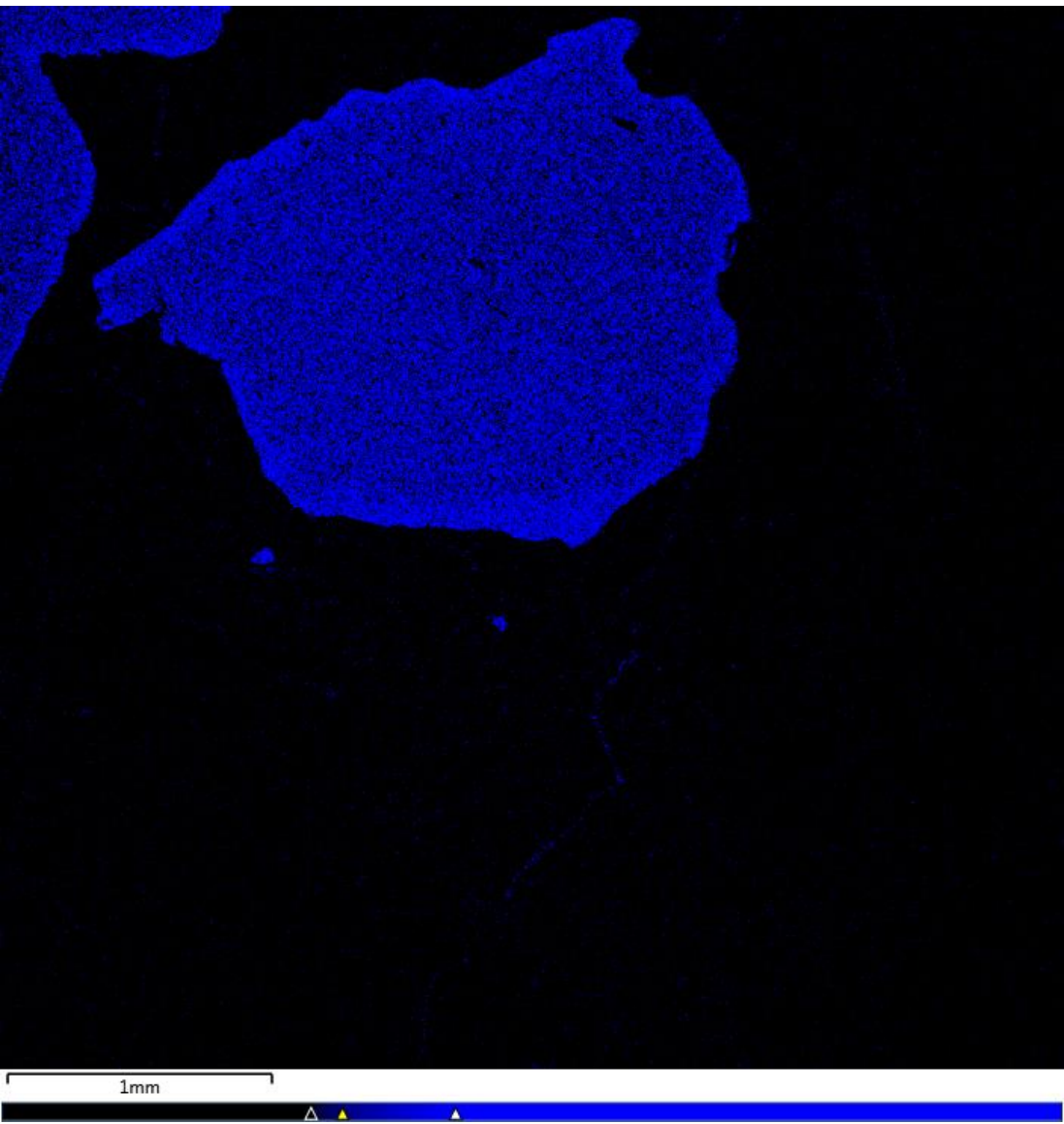
Al



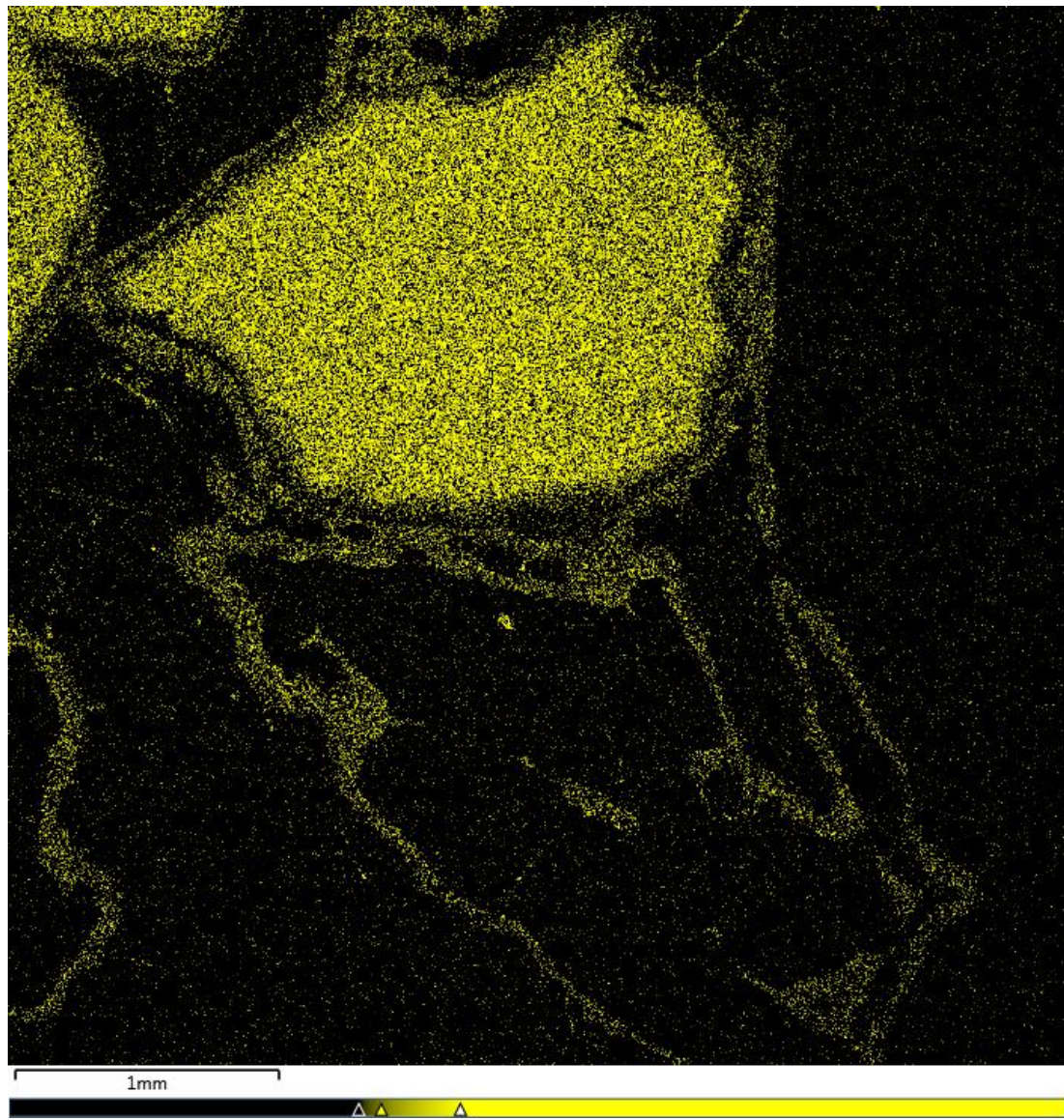
Si



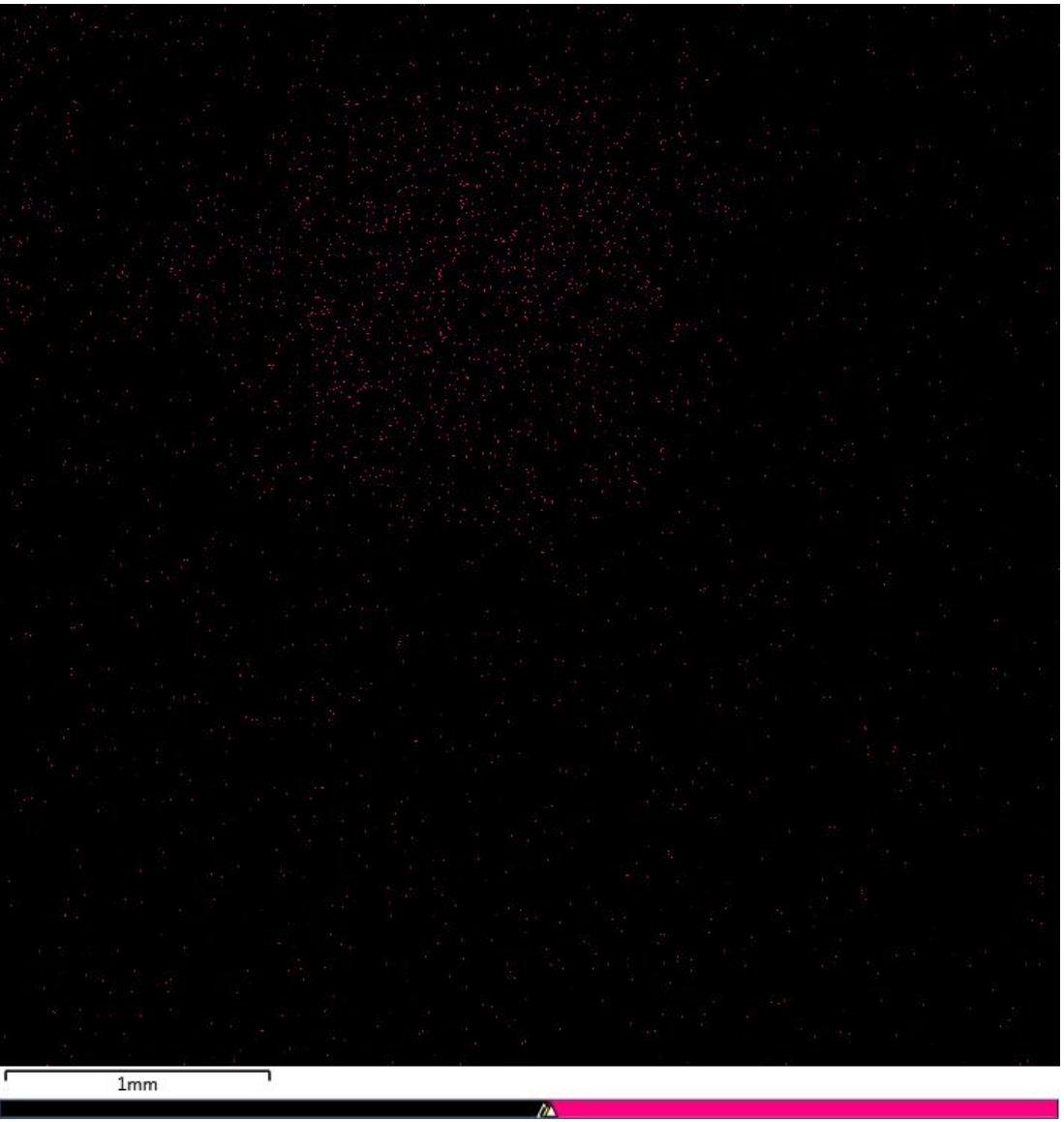
Mg



Ca



Mn



Fe

